

# Range of sustainable Irizar buses and coaches

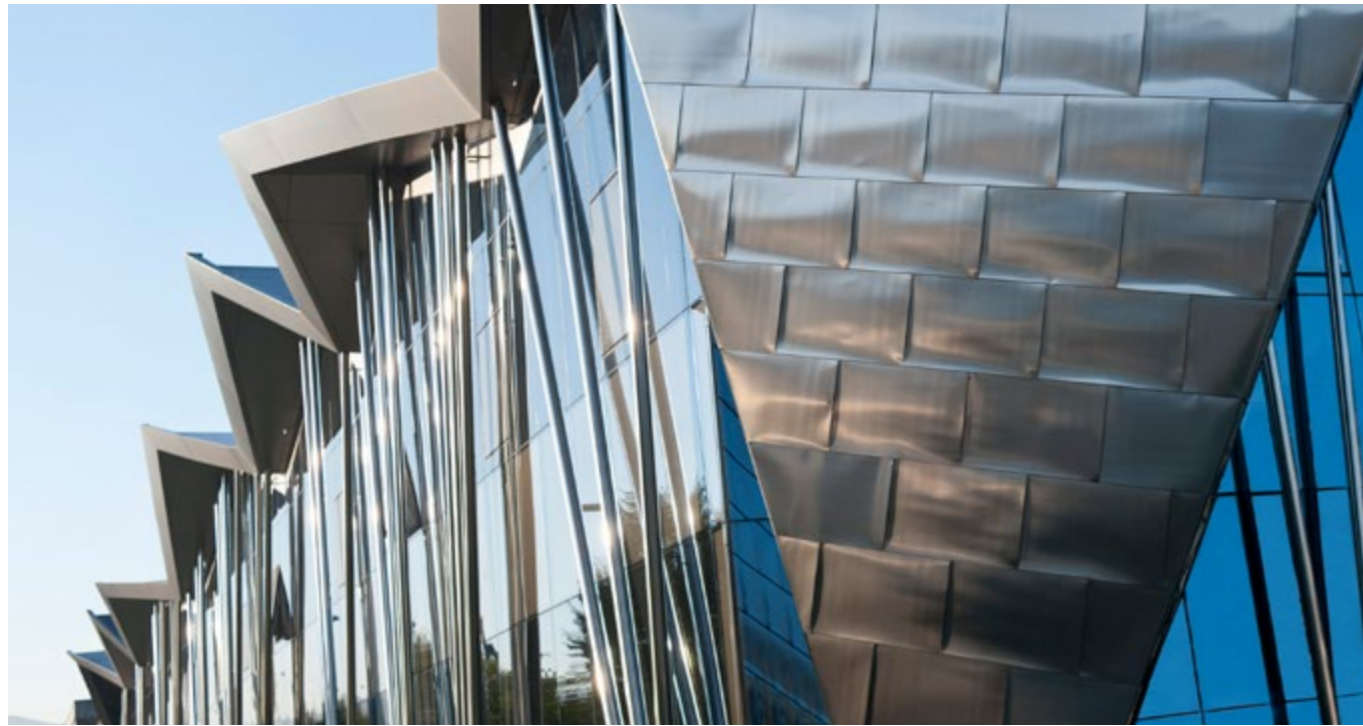
The best range of products  
ever seen



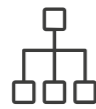
FOR A  
BETTER  
LIFE

## Contents

The Irizar Group	04
Multi-technology Efficient Range	06
Safety	08
Design and customisation	10
Design	11
The pleasure of travelling	12
Irizar Colour Collection	13
Service	14
iPanel	15
Range	16
Irizar i8	18
Irizar i6s	20
Irizar i6	22
Irizar i4	24
⚡ Irizar i3	26
⚡ Irizar ie bus	28
⚡ Irizar ie tram	30
⚡ Irizar ie truck	32
Hydrogen	34



Founded in 1889



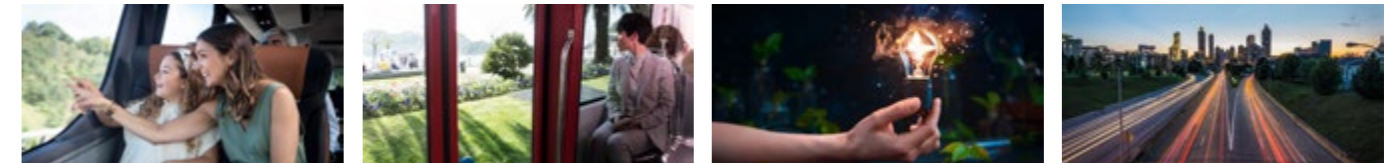
6 Leading Companies and 22 Companies of Their Own



13 Production Centres



1 R&D Centre



The Irizar Group, a solid group in continuous growth

## THE IRIZAR GROUP

**Irizar** is a business group with an **international presence** who focuses their business on the passenger transport, electromobility, electronics, electric motor and generator, connectivity and energy sectors.

Six companies are in the Group (**Irizar, Irizar e-mobility, Alconza, Hispacold, Masats and Jema**), that have 13 production plants in Spain, Morocco, Brazil, Mexico, and South Africa, in addition to their own R&D centre, whose goal is applied research and technological development for the Group's products and systems. Irizar, S. Coop is the parent company of the group and their headquarters is located in Ormaiztegui, Gipuzkoa, Spain, where Creatio, the group's research and development centre is also located.

Founded in 1889, today the **Irizar Group** is a solid group that is a pioneer in the sustainable mobility of the future, geographically and industrially diversified and in continuous growth that is firmly committed to the brand, technology and sustainability.



The IRIZAR Group



## IRIZAR EFFICIENT RANGE OF VEHICLES

The new era in mobility creates new challenges and at **Irizar** we want to keep being a key actor in sustainable mobility.

We are facing a multi-technology future where decarbonisation, electrification, reducing consumption and emissions and the digital transformation will be a major turning point in history. That is why we provide a full range of zero-emissions electric buses, diesel coaches, and biofuel, HVO, natural gas (CNG and LNG), hybrid and biofuel buses.



# INTELLIGENT TECHNOLOGY FOR YOUR AND YOUR PASSENGERS' SAFETY

**Our Goal**  
Zero accidents with Irizar vehicles

Avoiding incidents on the road is a priority for Irizar. Because of that, in addition to meeting the most demanding international standards in force, our buses and coaches have the most advanced active safety systems. We meet the highest safety standards in the new GSR framework by integrating advanced components, cameras and radar etc. for the safety of you and your passengers.

Insofar as passive safety, Irizar buses and coaches are designed with roll-over and head-on collision resistance in mind, taking optimum weight distribution into account.

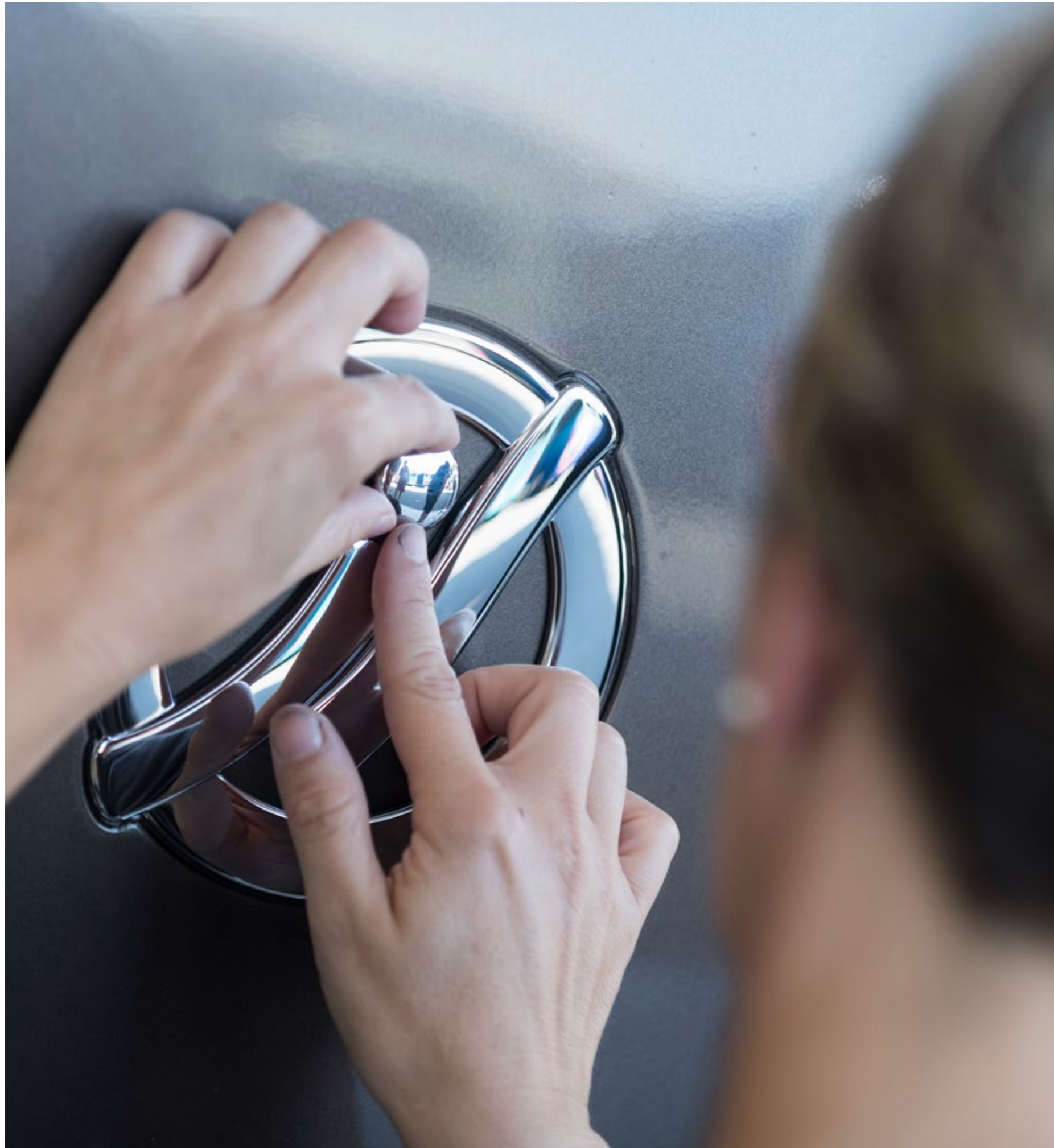
Irizar vehicles are designed using the most advanced technologies for design, materials, components and production processes. And they undergo the toughest fatigue trials and reliability tests at one of the most prestigious applied research institutes in the world, with excellent results.

## Let's talk about cybersecurity

We work day in day out to keep ahead of the cybersecurity challenges of our vehicles. We comply with the R155 and R156 European regulations for IT security and software updates for vehicles. We can thus guarantee that the systems work as expected, and we can mitigate the security risks that arise.

We are firmly committed to protecting and guaranteeing information confidentiality and integrity and the safety of everyone.





We want  
your coach to be  
**unique**

① DESIGN,  
BRAND ICON

---

**Harmonious integration**

There are stronger and more aggressive lines that flow across the sides of the buses underlining their firm yet refined exterior. The front and rear have a V shape that, in some cases, is accentuated using a piece of stainless steel.



Take your trip  
in a unique environment,  
in an Irizar environment

## ② THE PLEASURE OF TRAVELLING

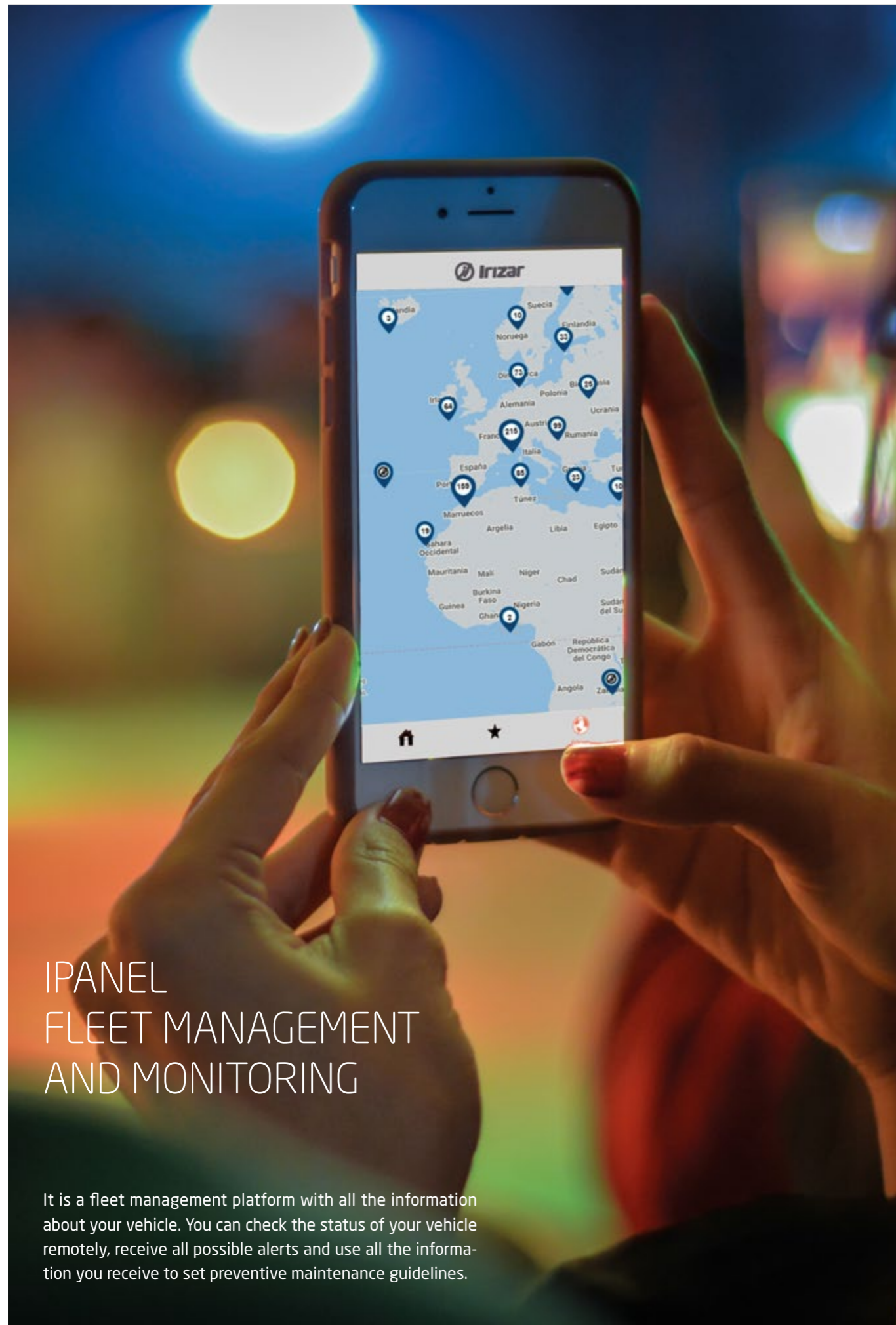
We provide the maximum capacity for adaptation, so your coach can be configured **however you like**.

Travelling in an Irizar is to let yourself get lost in a unique sensorial experience. Our goal is to create a feeling of well-being and leave an indelible memory at the end of the trip. We provide **maximum comfort** for all passengers.



## ③ Irizar Colour Collection

Materials, textures, colours, combinations... We provide the most exquisite selection for this grand Irizar collection.



## IPANEL FLEET MANAGEMENT AND MONITORING

It is a fleet management platform with all the information about your vehicle. You can check the status of your vehicle remotely, receive all possible alerts and use all the information you receive to set preventive maintenance guidelines.



## ENJOY THE MOMENT. WE'LL TAKE CARE OF EVERYTHING

We do design with maintainability in mind, and we stay with you for the entire life of the vehicle, trying to get higher profitability from your purchase. Keeping your coach on the road and avoiding unnecessary costs is our priority.



### 24 Hour Assistance

We have a large service network that includes integral repair services, tune-ups and maintenance with a maximum guarantee.

24 hours a day 365 days a year \*

*\* Integral vehicles only*



### Customised Solutions

We provide services with customised solutions designed and created to give you the best.



### Original Spares

Original Irizar spares keep the same level of safety and quality. Only with an optimum selection of parts can you keep the same levels of quality and performance of the engine and fuel consumption.



### iService

You can access the individualised spare parts catalogue for every vehicle and manage your orders. You can also conveniently see all the technical documentation for your coach.

# IRIZAR RANGE

Zero-emissions electric buses, and diesel, biofuel, HVO, natural gas (CNG and LNG), hybrid and biodiesel and hydrogen coaches



**Irizar i8**

- Premium coach
- Maximum comfort
- From 12.4 to 14.98 m



**Irizar i6S**

- Advanced aerodynamics
- Maximum efficiency
- From 10.8 to 15 m



**Irizar i6**

- Multi-purpose coach
- Maximum robustness
- From 10.8 to 15 m



**Irizar i4**

- Metropolitan and accessible
- Luggage capacity
- From 10.78 to 15 m

DIESEL

DIESEL

DIESEL

DIESEL

COMPRESSED NATURAL GAS

LIQUID NATURAL GAS

LIQUID NATURAL GAS

LIQUID NATURAL GAS

LIQUID NATURAL GAS

HYDROGEN

HYDROGEN COMING SOON

The innovation and knowledge provided by the companies in the Irizar Group are the pillars upon which we promote mobility in cities, advancing the use of buses as the best alternative for mass transit of people in urban settings.



**Irizar i3**

- 100% electric
- Accessible and functional
- Spacious interior
- From 12.75 to 15 m

DIESEL



**Irizar iebus**

- 100% electric
- Maximum efficiency

HYBRID

COMPRESSED NATURAL GAS

ELECTRIC

ELECTRIC



**Irizar ietram**

- High capacity
- Easy access
- Capacity for 145 people
- From 12 to 18 m

ELECTRIC



**Irizar ietruck**

- For urban areas
- Electric drive

ELECTRIC

HYDROGEN

– COACH

# Irizar i8

## A technological masterpiece

The **Irizar i8** is a coach for long distance premium services, regular lines or other special uses. And it is equipped with the **most advanced technology** on the market. It is a combination of design, technology and sustainability. It provides exceptional comfort for the driver, guide and passengers. Its unique design makes it a symbol of exclusivity, with extremely high levels of quality, robustness and efficiency.

- Premium coach, maximum comfort
- From 12.4 to 14.98 m long

Go to the [Irizar i8 technical catalogue](#) to see all the technical information.



## THE GOAL ENJOY THE TRIP



### The Front

On the front the attractive V-shaped stainless steel piece that is framed by stylized full LED headlights stands out.



### The interior

The interior is completely customizable and provides **maximum comfort** for passengers. Comfort that has its origin in tiny details, like the 22" high resolution monitors, LED lighting on the roof and capacitive lamps and switches, and cutting edge entertainment systems with individual and multimedia screens.



### Seats

Their elegance is evident, but their ergonomics, comfort, functionality and capacity for adaptation are too. You can add 220 V and USB outlets, built-in monitors, tray-tables, coat hangers and a wide variety of entertainment versions and systems to your configuration.



### The dashboard

Especially ergonomic, the multiplexed keys, HMI and central console that integrates all the electronic systems and the Irizar virtual gauge cluster with innovative functions can be highlighted.

– COACH

# Irizar i6S

## Efficiency without limits and advanced aerodynamics

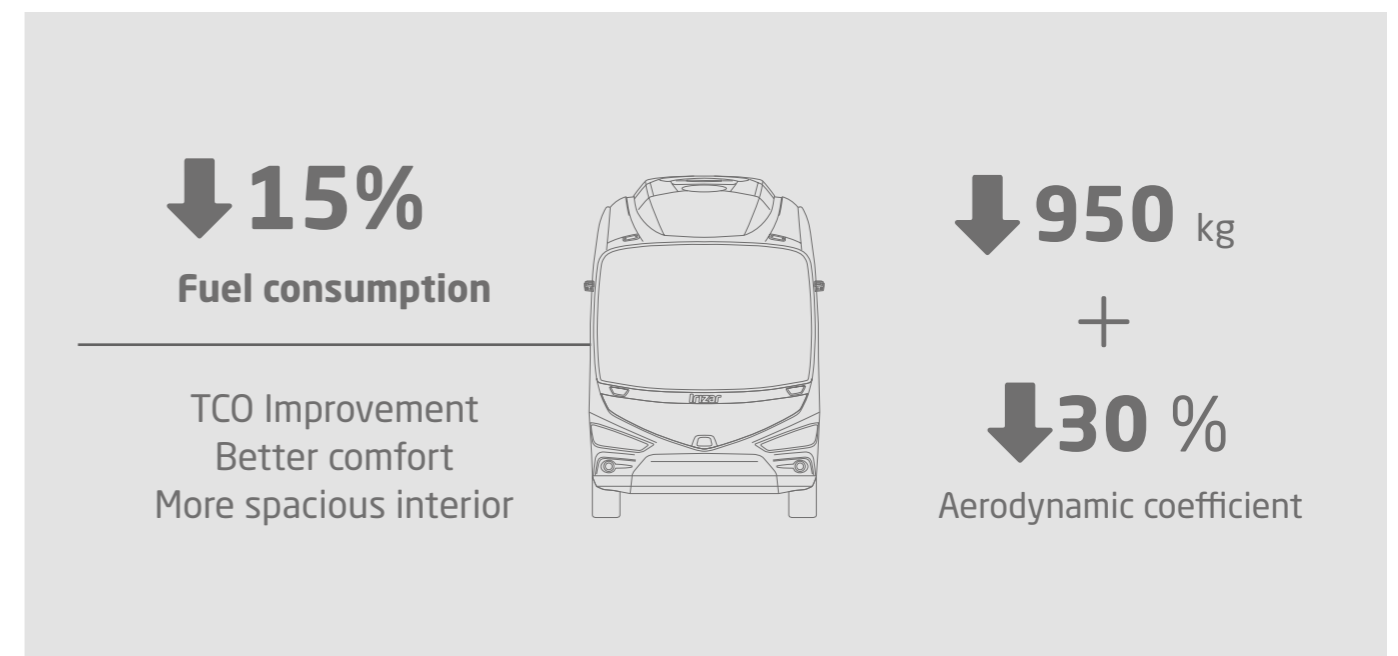
The **Irizar i6S Efficient** has consumption and emissions up to 15% lower than its predecessor. To achieve that its weight was reduced up to 950 kg and its aerodynamic coefficient was improved by 30%. That makes it a latest generation vehicle designed to provide maximum efficiency to operators and the best experience to passengers, while maintaining a commitment to **sustainability**.

- Advanced aerodynamics, low consumption
- From 10.8 to 15 m long

Go to the **Irizar i6S** technical catalogue to see all the **technical information**.



## EFFICIENT RANGE



↓ **15%**  
**Fuel consumption**

↓ **950** kg  
 +  
 ↓ **30 %**  
**Aerodynamic coefficient**

TCO Improvement  
 Better comfort  
 More spacious interior



**Digital vision camera**

It has the option to replace the rearview mirrors with digital vision cameras with the two-fold goal of providing wide-angle vision under any weather conditions. These modifications provide improvements in the driver's direct and indirect field of vision.



**Thinking about the driver**

We've increased and improved the driver's field of vision. In addition, the digital camera system automatically adapts the amount of light and improves the experience in all conditions and situations, even at night or in the rain.

– COACH

# Irizar i6

## Unlimited comfort

The **Irizar i6** is a versatile vehicle, ideal for both regular and occasional services, with an attractive modern design for clients who are seeking **maximum profitability**. It has a lot of adaptability that allows clients to configure the coach and other equipment options to suit their needs however they want.

- Versatile coach, maximum profitability
- From 10.8 to 15 m long

Go to the [Irizar i6 technical catalogue](#) to see all the technical information.



## A VERSATILE COACH



– COACH

# Irizar i4

## The power of versatility

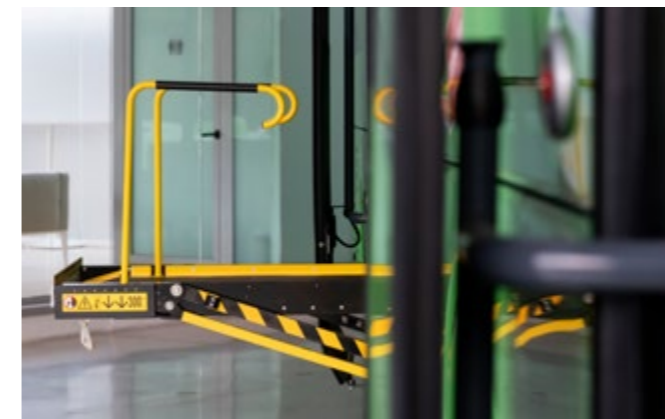
The **Irizar i4** is an ideal vehicle for metropolitan, commuter, school or business transport. The different versions of this vehicle (H, M, L) emphasize **accessibility**. The doors, with different single and double door options, enable lifts to be installed to facilitate access for reduced mobility passengers. The floors, which can be flat or lowered, and the unobstructed aisles underline the concept of adaptability.

- Metropolitan and accessible vehicle
- Different versions available
- From 10.78 to 15 m long

Go to the [Irizar i4 technical catalogue](#) to see all the technical information.



## ADAPTABILITY PUSHED TO THE LIMIT



### Accessibility

The great adaptability to the needs of customers and users and the different versions of this vehicle maximise its accessibility, which has become a key aspect in the design of the Irizar i4. The wide spaces and the different central door options allow for the installation of lifts, rails and anchorages for PRM.



### The interior

The use of new materials and **modern manufacturing technologies** that improve the durability, ageing, and recyclability of the materials is made palpable. The new design of the dashboard that enables modular integration of vending machines and OHS systems, an aesthetic redesign of seats and partitions, new lighter luggage racks, full LED lighting integrated in the central part of the roof, and panel covers made of stainless steel can be highlighted.



### Life cycle analysis

The Irizar i4 has had an environmental product declaration since 2019, which makes us the first company in the sector worldwide to obtain that certification in the environmental area.



– BUS

# Irizar i3 low entry

Urban, accessible, functional, and now 100% electric

The new 100% electric Irizar i3, developed to improve the efficiency of class II vehicles. Irizar's electromobility range has arrived at the intercity sector with a completely new design for a **silent** and **zero-emissions** vehicle. The new electric Irizar i3 maximises the number of passengers while keeping the same features of the entire range of Irizar vehicles.

- ⚡ 100% electric
- Accessible and functional
- Spacious interior
- From 12.75 m to 15 m long

Go to the Irizar i3 technical catalogue to see all the technical information.



## MAXIMUM RANGE AND PASSENGER CAPACITY



### Máximo range

This vehicle offers a range of more than 400 km on a single charge per day, to facilitate the operation of all customers. In addition, the electric Irizar i3 maintains the same features as the entire Irizar range.



### Adaptability

The wide selection of ramps makes this coach a fully accessible vehicle. Choose between the manual or automatic ramp for PRM access with a wide, open aisle, manual access ramp at the front or central door and electric telescopic ramp at the central door. In addition, the different seats available allow the vehicle to be adapted to the needs and particularities of each route.

– BUS

# Irizar ie tram

## A minimalist and refined design

The combination of the **high capacity, ease of access** and **movement inside** of a tram with being **zero-emissions** define the DNA of this vehicle. The innovative, inspiring design of the Irizar ie tram breaks with the classic transport codes and enhances the charm of the city by reflecting urban cultural diversity.

- Available in 12 and 18 m
- Up to 300 km range
- Engine power: up to 320 kW

Go to the Irizar e-mobility technical catalogue to see all the technical information.



## A TRAM ON ASPHALT THAT LEAVES NOBODY INDIFFERENT



### The Perimeter Ring

One of the most significant characteristics of its design is the chrome perimeter arc that flows all around the volume of the vehicle and frames the large glazed surface of the sides.



### The Front

Reflects fluidity and elegance. Its large glazed surface, an evocative throwback to a tram, alongside the full LED optics integrated into the perimeter rings confer a cutting-edge quality on the whole design and an impetus that is at once technological and rational.



### The Rear

The rear is another aesthetic move that underlines the break with the bus's cubism.



### The Hubcaps

Attention was paid to the smallest details to achieve the look of a rational tram at the same time.

– BUS

# Irizar ie bus

## Designed for the City

The bus's meticulous design inside and out makes a more attractive, **efficient**, **reliable** and **safe** vehicle. The front end, with a more pronounced and elegant touch, is increasingly similar to the aesthetic features of Irizar products. When it comes to the interior design, although the standard version has a more conventional specification, some of the Irizar ie tram options may be incorporated, including large windows, side lighting or screens above the windows, among others.

- Available in 10, 12 and 18 m
- Up to 300 km range
- Engine power: up to 320 kW

Go to the [Irizar e-mobility technical catalogue](#) to see all the technical information.



## YOUR URBAN TRANSPORT



– TRUCK

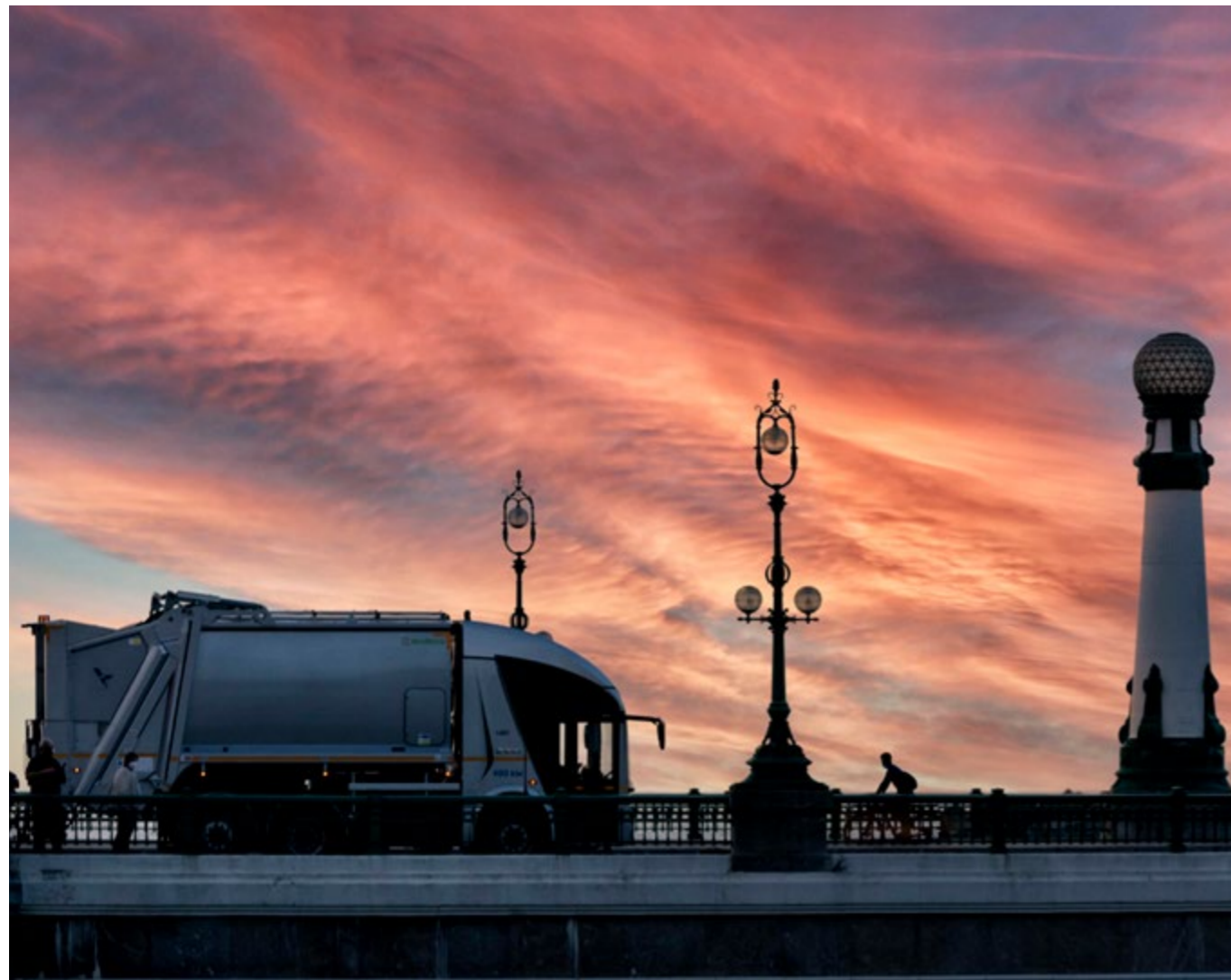
# Irizar ietruck

## A truck without noise or pollution

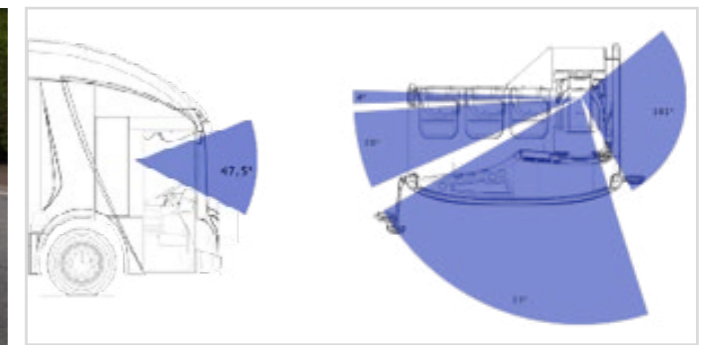
The Irizar ie truck is a 100% electrical truck which responds to different market needs and enables it to move around cities and urban environments **without atmospheric or acoustic pollution**. The result is a cleaner city and more sustainable environment for citizens.

- For cities and urban areas
- Electric drive

Go to the Irizar e-mobility technical catalogue to see all the technical information.



## AN ACCESSIBLE VEHICLE FOR DIFFERENT APPLICATIONS



### Low Cabin with Good Accessibility

Access is with a single 370 mm step with non-slip moulding. It has folding seats to create an aisle free of obstacles. It has a pneumatic door that opens towards the inside. It has an anti-entrapment sensor, a photocell and a sensitive edge

### Optimum Visibility Conditions for the Driver

There is a wider field of vision (202°) to increase reaction capacity. Thanks to the low driving position, class VI mirrors are not necessary, because their requirements are fulfilled with direct vision. There are sun blinds to improve visibility while driving.



– COACH

# Irizar i6S

## The Irizar i6S Efficient, now also hydrogen

The Irizar i6S Efficient Hydrogen fuel cell is our great commitment to decarbonisation and a complete sustainable range of Irizar vehicles. The first H2 zero-emission coach in Europe is a milestone on our path to the sustainable mobility of the future: smart, connected, zero-emission and multi-technology.



## THE FIRST HYDROGEN COACH IN EUROPE



### Up to 1000 km range

The Irizar Hydrogen i6S Efficient lets our clients keep operating like usual, because it has a range of up to 1000 km and charging times around 20 minutes. It can also run in 100% electric mode when required.

### Efficiency and durability

The main components of the vehicle stand out for their high efficiency and durability. The batteries stay with the vehicle for its entire useful life.

